



Polo Vivo



Polo Vivo Hatch Specification

X = standard O = optional - = not available

Polo Vivo Hatch Specification	55kW Trendline	63kW Comfortline	77kW Comfortline Tiptronic®	77kW Highline	81kW TSI GT
Engine					
Cylinders	4	4	4	4	3
Capacity (cm³)	1398	1398	1598	1598	999
Bore/Stroke (mm)	76,5 / 75,6	76,5 / 75,6	76,5 / 86,9	76,5 / 86,9	74.5 / 76.4
Valves (per cylinder)	4	4	4	4	4
Compression Ratio	10.5 : 1	10.5 : 1	10.5 : 1	10.5 : 1	-
Fuel Injection	X	X	X	X	X
CO ₂ Emissions (g/km)	132	140	144	147	114
Transmission					
5-speed manual	X	X	-	X	-
6-speed manual	-	-	-	-	X
6-speed manual Tiptronic®	-	-	X	-	-
Performance					
Power output (kW @ r/min)	55 @ 4800	63 @ 5000	77 @ 5250	77 @ 5250	81 @ 5000
Torque (Nm @ r/min)	130 @ 3,750	132 @ 3,750	153 @ 3800	153 @ 3800	200 @ 2000
Fuel consumption (litres / 100 km)*					
Extra-urban	4,5	4,8	4,9	4,8	4
Urban cycle	7,6	7,9	8,2	8,5	5,5
Combined	5,7	5,9	6,1	6,2	4,8
Performance:					
Top speed (km/h)	171	177	188	188	196
Running Gear					
Front axle:					
Lowered suspension	-	-	-	-	X
Raised suspension (15mm)	-	-	X	-	-
Suspension struts, wishbone	X	X	X	X	X
Rear axle:					
Suspension struts, toe correcting, torsion beam, trailing arm axle	X	X	X	X	X
Brakes					
Brake fluid warning indicator	X	X	X	X	X
Brake pressure regulator	X	X	X	X	X
Front discs	X	X	X	X	X
Rear drum brakes	X	X	X	X	X
ABS with EBD	X	X	X	X	X
Wheelrims / tyres					
Full wheel trim covers	X	X	X	-	-
Steel spare wheel with original equipment tyre	X	-	-	-	-
Space-saving spare wheel	-	X	X	X	X
Wheel cover 5J X 14 steel 185/60 R 14	X	-	-	-	-
"Estrada" 6J X 15 alloy 185/60 R 15	O	X	X	-	-
"Rivazza" 7J X 16 alloy 195/55 R 16	-	O	O	X	-
"Mirabeau" 7J X 17 alloy 215/40 R17	-	-	-	-	X
Dimensions / Capacities					
Fuel tank 45l	X	X	X	X	X
Luggage compartment 280l	X	X	X	X	X
(seats folded 952l)	X	X	X	X	X
DIN Kerb Weight (kg) (Kerb weight may vary depending on options fitted to vehicle)	1063	1066	1102	1081	1092
Gross Vehicle Mass (kg)	1530	1540	1570	1540	1530

Polo Vivo Hatch Specification

X = standard O = optional - = not available

Polo Vivo Hatch Specification	55kW Trendline	63kW Comfortline	77kW Comfortline Tiptronic®	77kW Highline	81kW TSI GT
Dimensions / Capacities (continued)					
Length (mm)	3972	3972	3972	3972	3972
Width (mm)	1682	1682	1682	1682	1682
Height (mm)	1462	1462	1462	1462	1447
Track - front (mm)	1463	1463	1463	1463	1463
Track - rear (mm)	1456	1456	1456	1456	1456
Turning circle (m)	10,6	10,6	10,6	10,6	10,6
Wheel base (mm)	2470	2470	2470	2470	2470
Ground Clearance (mm)	143	143	143	143	128
Towing Capacity Braked (kg)	-	1000	1000	1000	1000
Towing Capacity Unbraked (kg)	-	570	580	570	580
Audio & Communication					
Radio 140G SD/USB/Bluetooth with B-sting/2 Speakers and 2 Tweeters	X	X	X	-	-
Radio 340G SD/USB/Bluetooth/App-Connect with B-sting/2 Speakers and 2 Tweeters	-	O	O	-	-
Radio 340G SD/USB/Bluetooth/App-Connect with B-sting/4 Speakers and 2 Tweeters	-	-	-	X	X
Safety					
Driver and passenger airbags	X	X	X	X	X
ISOFIX child seat mounting points in rear	X	X	X	X	X
Childproof locks on rear doors	X	X	X	X	X
High level brake light	X	X	X	X	X
Front fog lights	-	X	X	X	X
Parking package (rear-view camera with rear PDC)	-	O	O	O	O
Electronic Stability Control	O	O	X	X	X
Tyre Pressure Monitor	O	O	X	X	X
Lights and Vision Package (Rain Sensor + Dusk Sensor)	-	O	O	O	X
LED Headlights Package (incl. Lights and Vision Package) forces PXX on Comfortline Manual	-	O	O	O	O
Security					
Immobiliser	X	X	X	X	X
Alarm with Remote Central locking	X	X	X	X	X
Ultrasonic alarm sensors	X	X	X	X	X
We Connect Go	X	X	X	X	X
Mirrors					
Aspherical driver's side	X	X	X	X	X
Black exterior mirrors	X	-	-	-	-
Body-coloured exterior mirrors	-	X	X	X	X
Manual and remotely adjustable mirrors from inside	X	X	X	X	X
Windows					
X					
Tinted glass all round	X	X	X	X	X
Heated rear window	X	X	X	X	X
Front electric windows	X	X	X	X	X
Wiper System					
Intermittent wiper	X	X	X	X	X
Rear wiper	X	X	X	X	X
Interior Features					
Heating and fresh air ventilation system	X	X	X	X	X
Cup holders, 2 integrated into centre console	X	X	X	X	X

Polo Vivo Hatch Specification

X = standard O = optional - = not available

Polo Vivo Hatch Specification	55kW Trendline	63kW Comfortline	77kW Comfortline Tiptronic®	77kW Highline	81kW TSI GT
Interior Features (continued)					
Digital clock	X	X	X	X	X
Digital trip recorder	X	X	X	X	X
Co-driver vanity mirror	X	X	X	X	X
Electronic rev counter	X	X	X	X	X
Front door pockets	X	X	X	X	X
Height-adjustable steering column	X	X	X	X	X
Reach-adjustable steering column	X	X	X	X	X
3-spoke steering wheel	X	X	X	-	-
Multi-function Steering Wheel	-	X	X	-	-
3-spoke mufu leather steering wheel with aluminium inserts	O	O	O	X	X
Painted upper centre console - Anthracite	X	X	X	X	-
Painted upper centre console - Colour	-	-	-	-	X
Anthracite sunvisors	-	-	-	-	X
Anthracite headlining/cover and A,B,C post uppers	-	-	-	-	X
Leatherette gearshift boot	X	X	X	X	X
High tone hooter	X	X	X	X	X
Lights on warning buzzer	X	X	X	X	X
Manual anti-dazzle rear-view mirror	X	X	X	X	X
Power steering	X	X	X	X	X
Manually controlled airconditioner	X	X	X	X	X
Multi-function Display	-	X	X	X	X
Cruise control	-	O	O	X	X
Sport pedal cluster	-	-	-	-	X
Loose-lay carpets mats	O	O	O	O	X
Seats					
Height-adjustable front head restraints	X	X	X	X	X
Rear head restraints	X	X	X	X	X
Rear seat bench backrest - fixed folding	X	X	X	X	X
Height-adjustable driver seat	-	X	X	X	X
"Tradition" cloth seat trim	X	-	-	-	-
"City" cloth seat trim	-	X	X	-	-
"Cable" cloth seat trim	-	-	-	X	-
"Space" cloth seat trim	-	-	-	-	X
Front Sports Seats	-	-	-	-	X

Polo Vivo Hatch Specification

X = standard O = optional - = not available

Polo Vivo Hatch Specification	55kW Trendline	63kW Comfortline	77kW Comfortline Tiptronic®	77kW Highline	81kW TSI GT
Exterior Features					
Body-coloured bumpers	X	X	X	X	X
Black door handles	X	-	-	-	-
Body-coloured door handles	-	X	X	X	X
Black painted roof	-	-	-	-	-
Rear tailgate spoiler	-	-	-	-	X
Underbody guard	-	-	X	-	-
GT lettering on the tailgate, front grille and sides	-	-	-	-	X
Black side moulding	-	-	-	-	X
Sporty single-pipe exhaust system with chrome trim	-	-	-	-	X
Black Styling Package + 16" Portago Alloy Wheels	-	O	-	O	-
Guarantees					
Warranty 3-year / 120 000 km	X	X	X	X	X
Anti-corrosion Warranty (6 years)	X	X	X	X	X
15 000 km service intervals	X	X	X	X	X
Volkswagen EasyDrive Vehicle Maintenance Plan	O	O	O	O	O
Volkswagen EasyDrive Vehicle Service Plan	O	O	O	O	O
Disclaimer					
<p>Dimensions, capacities and abilities apply to standard vehicles from model year 23. Actual consumption will vary with vehicle loading, driving style, climatic and road conditions. This information was effective as at 04 October 2022 valid for model year 23 and is subject to change without notice.</p>					

Prices & Options - Polo Vivo Hatch

Prices are inclusive of CO₂ tax and 15% VAT
X = standard O = optional - = not available

Recommended Retail Prices	55kW Trendline	63kW Comfortline	77kW Comfortline Tiptronic®	77kW Highline	81kW TSI GT
Retail Price	R243,600	R263,000	R292,200	R291,600	R327,900
Metallic / Pearlescent Paint	No Cost	No Cost	No Cost	No Cost	No Cost
Cruise Control	-	R2,200	R2,200	X	X
Floor Mats Front and Rear	R650	R650	R650	R650	X
Storage Package (Front Centre Armrest + Drawer under Drivers Seat)	-	R2450	R2450	R2450	R2450
Safety Package (ESC + Tyre Pressure Monitor)	R2,800	R2,800	X	X	X
Radio 340G SD/USB/MP3/Bluetooth/App-Connect with B-sting/2 Speakers & 2 Tweeters	-	R3,500	R3,500	-	-
"Estrada" 15" alloy wheels	R6,600	X	X	-	-
"Rivazza" 16" alloy wheels	-	R2,800	R2,800	X	-
Parking Package (rear-view camera with rear PDC)	-	R6,150	R6,150	R6,150	R6,150
Lights and Vision Package (Rain Sensor + Dusk Sensor)	-	R4,500	R4,500	R4,500	X
LED Headlights Package (incl Lights and Vision Package) forces PXX on Comfortline Manual	-	R15,700	15,700	R15,700	-
LED Headlights Package (Lights and Vision Package standard on GT)	-	-	-	-	R11,300
Black Style Package + 16" "Portago" Alloy wheels	-	R9,500	-	R8,650	-

Prices & Options were effective as at 04 October 2022 and subject to change without prior notice.

Prices & Options - Polo Vivo Hatch

Prices are inclusive of CO₂ tax and 15% VAT
X = standard O = optional - = not available

Volkswagen EasyDrive Vehicle Maintenance Plans	55kW Trendline	63kW Comfortline	77kW Comfortline Tiptronic®	77kW Highline	81kW TSI GT
Optional Maintenance Plan (3-year / 45 000 km)			R6,233		
Optional Maintenance Plan (4-year / 60 000 km)			R11,192		
Optional Maintenance Plan (5-year / 90 000 km)			R18,983		
Optional Maintenance Plan (5-year / 120 000 km)			R29,892		
Optional Maintenance Plan (6-year / 150 000 km)			R41,792		
Optional Maintenance Plan (6-year / 180 000 km)			R52,275		
Optional Maintenance Plan (7-year / 210 000 km)			R63,891		
Optional Maintenance Plan (8-year / 240 000 km)			R77,208		
Optional Maintenance Plan (9-year / 270 000 km)			R89,108		
Optional Maintenance Plan (10-year / 300 000 km)			R102,000		

Subject to an Active Standard Volkswagen warranty or an Active Genuine Volkswagen Maintenance Plan

Volkswagen EasyDrive Vehicle Service Plans	55kW Trendline	63kW Comfortline	77kW Comfortline Tiptronic®	77kW Highline	81kW TSI GT
Service Plan (3-year / 45 000 km)			R5,164		
Service Plan (4-year / 60 000 km)			R7,891		
Service Plan (5-year / 90 000 km)			R12,162		
Service Plan (5-year / 120 000 km)			R16,214		
Service Plan (6-year / 150 000 km)			R20,485		
Service Plan (6-year / 180 000 km)			R24,544		
Service Plan (7-year / 210 000 km)			R29,828		
Service Plan (8-year / 240 000 km)			R34,967		
Service Plan (9-year / 270 000 km)			R39,238		
Service Plan (10-year / 300 000 km)			R45,396		

Share the ride



**The Polo Vivo is here and
it's equipped with a variety
of features to suit you and
your crew.**

From the front electric windows, ISOFIX mounting points for baby seats, Ultrasonic alarm, to its stylish exterior and sound system, the Polo Vivo has it all. With features as attractive as this, everyone will want to share the ride.



Style comes standard

The Polo Vivo looks as smooth as it drives. With its smart design and handy features, it's no wonder it grabs attention.

Features you can expect across the Polo Vivo range:

- Front electric windows
- ISOFIX mounting points for baby seats
- Ultrasonic alarm system

For more information on standard features and optional extras on selected models, visit www.vw.co.za



Black Style Package

Add even more style to your Polo Vivo with the Black Style package.

This sleek design includes a gloss black finish on the roof, mirror caps, 16" Portago wheels and pillar covers. Other striking features like the matt black side sill covers, lowered suspension (-15mm), body-coloured R-Line boot spoiler, privacy glass and chrome exhaust tip, give this package even more attitude.

Available on the Comfortline Manual and Highline model.



It's what's on the inside **that counts**



Note that this is a Highline with optional features

As the adage goes, it's what's on the inside that counts – the same is true for Polo Vivo. It raises the bar for vehicles in its category.

Standard features you can expect in the Polo Vivo include:

- Electronic rev counter
- Digital clock
- Digital trip recorder
- Passenger vanity mirror
- Front door pockets
- Height- and reach-adjustable steering column
- Manual anti-dazzle rear-view mirror
- Power steering
- Airconditioning

For more information on optional extras on selected models, visit www.vw.co.za



Note that this is a Highline with optional features

Innovation has never **looked this good**

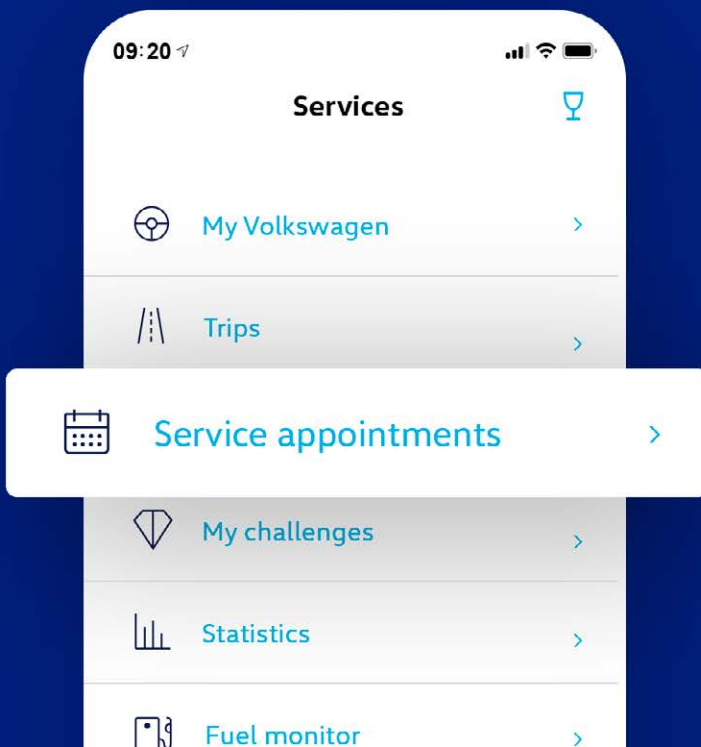
The Polo Vivo is equipped with more digital features than any other small car in its category.

The 340G radio with SD, USB, Bluetooth, App-Connect with B-sting/2 speakers and 2 tweeters are optional on the Comfortline. All these features, as well as 4 speakers and 2 tweeters, come standard on the Highline and GT.

App-Connect allows you to access certain smartphone functions such as selected apps, maps and music through the Android Auto and CarPlay applications.

For more information on standard features and optional extras on selected models, visit www.vw.co.za

Your personal **car companion**




We Connect Go[®]



Get ready to experience the next generation of Volkswagen connectivity with the We Connect Go App and DataPlug, an optional feature in the Polo Vivo.

We Connect Go takes the Volkswagen digital user experience to a new level by connecting you with your Volkswagen using a Bluetooth-connected DataPlug, which comes standard. With it, you have all the important vehicle information you need, at your fingertips. You will be able to:

- Record vehicle journeys and fuelling costs
- Find your car without searching
- Quickly call for help in cases of emergency
- Analyse and help optimise your driving style



Feel safe and sound in the **Polo Vivo**

When you get behind the wheel of a Polo Vivo, you can trust that you and your passengers are well protected. From airbags to ISOFIX mounting points for baby seats, young and old will be safeguarded. Knowing that your car comes with these features, is just one more reason to own a Polo Vivo.

Features you can expect in the Polo Vivo:

- Driver & passenger airbags
- ISOFIX baby seat mounting points
- Childproof locks on rear doors
- High-level brake light
- Electronic Stability Control (Optional on the Trendline and manual Comfortline)
- Tyre Pressure Monitor (Optional on the Trendline and manual Comfortline)



More power **to you**

If you're looking for punch and potency in a car, we have something for you.

The Trendline comes with a power output of 55kW and the Comfortline (manual) with 63kW, Comfortline Tiptronic® and Highline all come with 77kW and GT comes with 81kW. While all five trim lines share a bunch of attractive features, they also come with their own optional and standard key features. At the end of the day, how you like your Polo Vivo is entirely up to you.

Raising the bar on tar



When you get behind the wheel of the Polo Vivo GT, you'll agree that it's in a class of its own and as stylish as it is sporty.

It comes with attractive exterior features such as 17" 'Mirabeau' wheels and a single pipe exhaust with chrome trim. Interior attributes include a 1.0 TSI 81kW engine, front Sport seats, aluminium-look pedals and 'Anthracite' headlining.

More features you can expect in the GT:

- Cruise Control
- Lowered suspension (-15mm)
- GT logo on sides of vehicle and grille
- 'Anthracite' sunvisors
- 'Space' seat trim
- Light and Vision Package
- Tailgate spoiler in black

Colours

The illustrations on this page can only be regarded as a general guide as the printing process cannot render the true depth and brilliance of the paint finishes with absolute accuracy. Please note that certain paint and trim combinations may not be available.

Polo Vivo



Reef Blue
Metallic



Pure White



Limestone Grey
Metallic



Reflex Silver
Metallic



Black Style Package

Wheels & Rims



14" steel wheels
(Standard on Trendline)



Estrada
15" alloy wheels
(Standard on Comfortline / Optional on Trendline)



Rivazza
16" alloy wheels
(Standard on Highline / Optional on Comfortline)

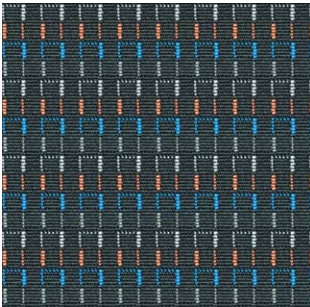


Mirabeau
17" alloy wheels
(Standard on GT)

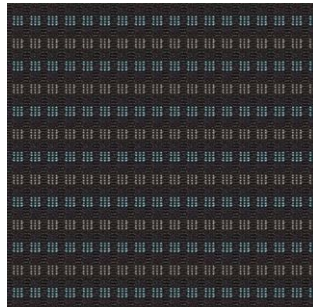


Portago
16" gloss black alloy wheels
(Optional on Comfortline and Highline with Black Style Package)

Trims



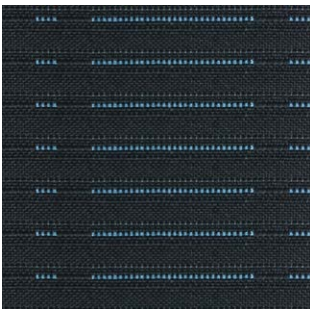
Tradition
Cloth seat trim
(Standard on Trendline)



City
Cloth seat trim
(Standard on Comfortline)



Cable
Cloth seat trim
(Standard on Highline)



Space
Cloth seat trim
(Standard on GT)



This information was effective as at 04 October 2022
valid for model year 23 and is subject to change without notice.

Visit us at vw.co.za
©Volkswagen South Africa