



Caddy Panel Van

Commercial
Vehicles





Caddy Panel Van Specifications

X = standard O = optional - = not available

Caddy Panel Van Specification	Caddy Panel Van 1.6i 81kW SWB	Caddy Panel Van 2.0 TDI 81kW SWB
Engine		
Cylinders	4	4
Capacity (cm ³)	1598	1968
Output (kW @ r/min)	81 @ 5800	81 @ 4200
Torque (Nm @ r/min)	155 @ 3800-4000	250 @ 1500-2500
CO ₂ emissions (g/km)*	164	147
Transmission		
5-speed manual	X	X
Performance		
Acceleration in seconds (0-100 km/h)	12,5	11,8
Top speed (km/h)	172	170
Fuel Consumption		
Urban cycle (litres/100 km)*	9,3	6,9
Extra-urban cycle (litres/100 km)*	6,1	5,0
Combined cycle (litres/100 km)*	7,3	5,7
Running Gear		
Standard suspension and shock absorption	X	X
Brakes		
ABS (Anti-lock Braking System)	X	X
MCB (Multi-Collision Braking)	X	X
ESP (Electronic Stability Programme)	X	X
EDL (Electronic Differential Lock)	X	X
TCS (Traction Control System)	X	X
Hill-hold control	-	-
Wheelrims/Tyres		
15" steel wheels	X	X
16" steel wheels	-	-
16" 'Fortaleza' alloy wheels	-	-
Tyres 195/65 R15 91T	X	X
Tyres 205/55 R16 94T	O	O
Full-sized spare wheel (steel)	X	X
Full-sized spare wheel (alloy)	-	-
Dimensions/Capacities		
Fuel tank (litres)	55	55
Length (mm)	4408	4408
Width excl. mirrors (mm)	1793	1793
Width incl. mirrors (mm)	2065	2065
Height excl. roof rails (mm)	1823	1823
Height incl. roof rails (mm)	1860	1860
Wheelbase (mm)	2682	2682

Caddy Panel Van Specifications

X = standard O = optional - = not available

Caddy Panel Van Specification	Caddy Panel Van 1.6i 81kW SWB	Caddy Panel Van 2.0 TDI 81kW SWB
Dimension / Capacities (continued)		
Ramp angle (degrees)	14,0	14,0
Departure angle (degrees)	17,3	17,3
Turning circle (m)	11,1	11,1
Load compartment width, min./max. (mm)	1170/1556	1170/1556
Luggage compartment floor length (mm)	1779	1779
Load compartment volume (m ³)	3,2	3,2
Side sliding doors, width x height (mm)	701 x 1097	701 x 1097
Tailgate, width x height (mm)	1183 x 1134	1183 x 1134
Gross Vehicle Mass (GVM) (kg)	2054	2147
Unladen weight, minimum (kg)	1309	1402
Payload, maximum (kg)	745	745
Axle load limit - Front/Rear (kg)	1050/1230	1075/1230
Trailer weight, 12% gradient - Braked/Unbraked (kg)	1300/650	1500/700
Gross train weight (kg), 12% gradient	3300	3647
Roof load limit (kg)	100	100
Trailer nose weight (kg)	80	80
Seats		
Number of seats	2	2
'Austin' fabric seat trim covers	X	X
Driver and front passenger seats with drawer preparation	X	X
Height adjustment for driver's seat	X	X
Windows		
Manual windows	X	X
Electric windows and exterior mirrors	O	O
Rear window covered by opaque film from the inside (w/o window heating)	X	X
Heat-insulating glass (green)	X	X
Heat-insulating windshield made of laminated glass	X	X
Wiper System		
Windshield wiper with intermittent control	X	X
Safety		
Driver and front passenger airbags (incl. front passenger deactivation)	X	X
Rest Assist (fatigue detection)	O	O
3-point seatbelts, front	X	X
Warning buzzer and light for driver seatbelt not fastened	X	X
First Aid kit and warning triangle	X	X
Security		
Remote-controlled central locking with SAFELOCK	X	X
Anti-theft alarm system with back-up horn, towing protection, interior monitoring and central locking (separate unlocking for driver's door)	X	X

Caddy Panel Van Specifications

X = standard O = optional - = not available

Caddy Panel Van Specification	Caddy Panel Van 1.6i 81kW SWB	Caddy Panel Van 2.0 TDI 81kW SWB
Audio and Communication		
'Composition Audio' radio with LCD screen and integrated USB	X	X
2 speakers	X	X
Cellphone interface	X	X
Interior Features		
Climatic® airconditioning system	X	X
Servotronic® power steering (speed-sensitive)	X	X
Cruise control	O	O
Multi-function display ('Plus')	O	O
Dust and pollen filter	X	X
High partition with grille	X	X
High partition without window	-	-
Centre console with 4 cup holders (2 front, 2 rear)	X	X
Plastic door trim panel and armrest	X	X
Sunvisors for driver and front passenger (w/o vanity mirror)	X	X
Glove compartment (illuminated) with lockable lid	X	X
Rubber floor covering in cab	X	X
12V socket in dashboard	X	X
Smokers' package: 12V socket with cigarette lighter and ashtray	X	X
Interior lighting	X	X
Lashing rings	6	6
Exterior Features		
Grey bumpers	X	X
Body-coloured bumpers and mirror housings	-	-
Sliding door - left	X	X
Sliding door - right	O	O
Protective side moulding (Body-coloured on Maxi Panel Van Sport)	X	X
Exterior mirror housings, door and tailgate handles in black	X	X
Exterior mirror housings and door handles in body colour, tailgate/wing door handles in black	-	-
Roof rail preparation	X	X
Rear wing doors with windows covered by opaque film on the inside	X	X
Radiator grille (grained) with 1 chrome moulding	X	X
Exterior mirrors - adjustable from outside	X	X
Exterior mirrors - electrically adjustable and heated	O	O
Large side turn signal lights	X	X
Halogen headlights	X	X
Separate daytime running lights (permanently switched on during driving)	X	X
Front fog lamps	O	O
Towbar preparation (incl. trailer stabilisation)	X	X

Caddy Panel Van Specifications

X = standard O = optional - = not available

Caddy Panel Van Specification	Caddy Panel Van 1.6i 81kW SWB	Caddy Panel Van 2.0 TDI 81kW SWB
Options		
15" 'Caloundra' alloy wheels	O	O
16" 'Bendigo' alloy wheels	O	O
Curtain airbags	O	O
Park Distance Control - rear only	O	O
Rubber floor covering in load compartment	O	O
Fixed towbar (incl. trailer stabilisation)	O	O
Sliding door - right	O	O
Electric windows and exterior mirrors	O	O
Comfort Package: Cruise control and front foglights	O	O
Comfort roof headlining in cab with hardboard in load compartment (only with exterior metallic paint)	O	O
Communications Package II: 'Composition Media' radio with multi-function leather** steering wheel, Bluetooth, USB iPod capable, multi-function display and Rest Assist (fatigue detection)	O	O
Bi-xenon headlamps with separate LED daytime running lights and blacked-out tail lights, Light & Sight Package: 'Coming/Leaving Home' function, light and rain sensor with auto-dimming rear-view mirror	O	O
Guarantees		
2-year / 120,00 km unlimited warranty	X	X
3-year / 60,000 km Volkswagen EasyDrive Vehicle Service Plan	X	X
15,000 km service intervals	X	X
12-year anti-corrosion warranty	X	X

Disclaimer

1. Dimensions, capacities and abilities apply to standard vehicles.
2. Actual consumption will vary with vehicle loading, driving style, climatic and road conditions.
3. This information was effective as at 01 July 2020 valid for model year 20 and is subject to change without notice.

All diesel vehicles require low sulphur grade diesel of 50 ppm or lower.

*Fuel Consumption and Carbon Dioxide Emission Figures

Fuel consumption and CO₂ emissions values were obtained in accordance with the prescribed uniform measuring standard (SANS 20101: 2006 / ECE R101: 2005 in its currently applicable version). The verified values do not apply to a specific vehicle and do not constitute part of the product offer. They are provided solely for the purposes of comparison between different vehicle models. Because of the need to maintain strict comparability of results achieved by the standard tests, they cannot be fully representative of real-life driving conditions. Variations in driving styles and in road, vehicle and ambient conditions, will have a bearing on the results achieved on the road. For these reasons consumption achieved on the road will not necessarily accord with these verified values. Based on lightest variable (no options) and 90% tank filling. Weight may vary depending on options fitted to vehicle. All measurements listed are based on series vehicles. Because of manufacturing tolerances/tyre sizes/type of chassis, the actual dimensions may differ slightly from the values stated here. The information about the degree of slope angle front and rear as well as the ramp angle each refer to the loaded condition of the vehicle in consideration of the gross vehicle weight.

**A combination of leather and high quality durable materials.

Caddy Panel Van Specifications

X = standard O = optional - = not available

Caddy Panel Van Specification	Caddy Maxi Panel Van 2.0 TDI 81kW LWB	Caddy Maxi Panel Van Sport 2.0 TDI 81kW LWB	Caddy Maxi Panel Van 2.0 TDI 103kW DSG® LWB
Engine			
Cylinders	4	4	4
Capacity (cm ³)	1968	1968	1968
Output (kW @ r/min)	81 @ 4200	81 @ 4200	103 @ 4200
Torque (Nm @ r/min)	250 @ 1500-2500	250 @ 1500-2500	320 @ 1750-2500
CO ₂ emissions (g/km)*	149	149	169
Transmission			
5-speed manual	X	X	-
6-speed DSG®	-	-	X
Performance			
Acceleration in seconds (0-100 km/h)	12,1	12,1	10,4
Top speed (km/h)	170	170	186
Fuel Consumption			
Urban cycle (litres/100 km)*	7,0	7,0	7,6
Extra-urban cycle (litres/100 km)*	5,1	5,1	5,5
Combined cycle (litres/100 km)*	5,8	5,8	6,3
Running Gear			
Standard suspension and shock absorption	X	X	X
Brakes			
ABS (Anti-lock Braking System)	X	X	X
MCB (Multi-Collision Braking)	X	X	X
ESP (Electronic Stability Programme)	X	X	X
EDL (Electronic Differential Lock)	X	X	X
TCS (Traction Control System)	X	X	X
Hill-hold control	-	-	X
Wheelrims/Tyres			
15" steel wheels	-	-	-
16" steel wheels	X	-	X
16" 'Fortaleza' alloy wheels	-	X	-
Tyres 195/65 R15 91T	-	-	-
Tyres 205/55 R16 94T	X	X	X
Full-sized spare wheel (steel)	X	-	X
Full-sized spare wheel (alloy)	-	X	-
Dimensions / Capacities			
Fuel tank (litres)	55	55	55
Length (mm)	4878	4878	4878
Width excl. mirrors (mm)	1793	1793	1793
Width incl. mirrors (mm)	2065	2065	2065
Height excl. roof rails (mm)	1836	1836	1836
Height incl. roof rails (mm)	1872	1872	1872
Wheelbase (mm)	3006	3006	3006

Caddy Panel Van Specifications

X = standard O = optional - = not available

Caddy Panel Van Specification	Caddy Maxi Panel Van 2.0 TDI 81kW LWB	Caddy Maxi Panel Van Sport 2.0 TDI 81kW LWB	Caddy Maxi Panel Van 2.0 TDI 103kW DSG® LWB
Dimensions / Capacities (continued)			
Overhang - front (mm)	879	879	879
Overhang - rear (mm)	993	993	993
Ground clearance (measured underneath the engine guard) (mm)	163	163	163
Loading sill over stationary level (mm)	588	588	588
Loading height (mm)	1259	1259	1259
Approach angle (degrees)	16,7	16,7	16,7
Ramp angle (degrees)	12,1	12,1	12,1
Departure angle (degrees)	14,8	14,8	14,8
Turning circle (m)	12,2	12,2	12,2
Load compartment width, min./max. (mm)	1168/1532	1168/1532	1168/1532
Luggage compartment floor length (mm)	2249	2249	2249
Load compartment volume (m³)	4,2	4,2	4,2
Side sliding doors, width x height (mm)	701 x 1092	701 x 1092	701 x 1092
Tailgate, width x height (mm)	1183 x 1134	1183 x 1134	1183 x 1134
Gross Vehicle Mass (GVM) (kg)	2300	2300	2300
Unladen weight, minimum (kg)	1485	1485	1535
Payload, maximum (kg)	749	749	798
Axle load limit - Front/Rear (kg)	1150/1230	1150/1230	1175/1250
Trailer weight, 12% gradient - Braked/Unbraked (kg)	1457/780	1500/740	1500/750
Gross train weight (kg), 12% gradient	3650	3650	3800
Roof load limit (kg)	100	100	100
Trailer nose weight (kg)	80	80	80
Seats			
Number of seats	2	2	2
'Austin' fabric seat trim covers	X	X	X
Driver and front passenger seats with drawer preparation	X	X	X
Height adjustment for driver's seat	X	X	X
Windows			
Manual windows	X	-	X
Electric windows and exterior mirrors	O	X	O
Rear window covered by opaque film from the inside (w/o window heating)	X	X	X
Heat-insulating glass (green)	X	X	X
Heat-insulating windshield made of laminated glass	X	X	X
Security			
Remote-controlled central locking with SAFELOCK	X	X	X
Anti-theft alarm system with back-up horn, towing protection, interior monitoring and central locking (separate unlocking for driver's door)	X	X	X
Audio and Communication			
'Composition Audio' radio with LCD screen and integrated USB	X	X	X

Caddy Panel Van Specifications

X = standard O = optional - = not available

Caddy Panel Van Specification	Caddy Maxi Panel Van 2.0 TDI 81kW LWB	Caddy Maxi Panel Van Sport 2.0 TDI 81kW LWB	Caddy Maxi Panel Van 2.0 TDI 103kW DSG® LWB
Audio and Communication (continued)			
2 speakers	X	X	X
Cellphone interface	X	X	X
Interior Features			
Climatic® airconditioning system	X	X	X
Servotronic® power-steering (speed-sensitive)	X	X	X
Cruise control	O	X	O
Multi-function display ('Plus')	O	O	X
Dust and pollen filter	X	X	X
High partition with grille	-	-	-
High partition without window	X	X	X
Centre console with 4 cup holders (2 front, 2 rear)	X	X	X
Plastic door trim panel and armrest	X	X	X
Sunvisors for driver and front passenger (w/o vanity mirror)	X	X	X
Glove compartment (illuminated) with lockable lid	X	X	X
Rubber floor covering in cab	X	X	X
12V socket in dashboard	X	X	X
Smokers' package: 12V socket with cigarette lighter and ashtray	X	X	X
Interior lighting	X	X	X
Lashing rings	8	8	8
Exterior Features			
Grey bumpers	X	-	X
Body-coloured bumpers and mirror housings	-	X	-
Sliding door - left	X	X	X
Sliding door - right	X	X	X
Protective side moulding (Body-coloured on Maxi Panel Van Sport)	X	X	X
Exterior mirror housings, door and tailgate handles in black	X	-	X
Exterior mirror housings and door handles in body colour, tailgate/wing door handles in black	-	X	-
Roof rail preparation	X	X	X
Rear wing doors with windows covered by opaque film on the inside	X	X	X
Radiator grille (grained) with 1 chrome moulding	X	X	X
Exterior mirrors - adjustable from outside	X	-	X
Exterior mirrors - electrically adjustable and heated	O	X	O
Large side turn signal lights	X	X	X
Halogen headlights	X	X	X
Separate daytime running lights (permanently switched on during driving)	X	X	X
Front fog lamps	O	X	O
Towbar preparation (incl. trailer stabilisation)	X	X	X

Caddy Panel Van Specifications

X = standard O = optional - = not available

Caddy Panel Van Specification	Caddy Maxi Panel Van 2.0 TDI 81kW LWB	Caddy Maxi Panel Van Sport 2.0 TDI 81kW LWB	Caddy Maxi Panel Van 2.0 TDI 103kW DSG® LWB
Options			
15" 'Caloundra' alloy wheels	-	-	-
16" 'Bendigo' alloy wheels	O	-	O
Curtain airbags	O	O	O
Park Distance Control - rear only	O	O	O
Rubber floor covering in load compartment	O	O	O
Fixed towbar (incl. trailer stabilisation)	O	X	O
Sliding door - right	X	X	X
Electric windows and exterior mirrors	O	X	O
Comfort Package: Cruise control and front foglights	O	X	O
Comfort roof headlining in cab with hardboard in load compartment (only with exterior metallic paint)	O	O	O
Communications Package II: 'Composition Media' radio with multi-function leather** steering wheel, Bluetooth, USB iPod capable, multi-function display and Rest Assist (fatigue detection)	-	O	-
Bi-xenon headlamps with separate LED daytime running lights and blacked-out tail lights	O	O	O
Light & Sight Package: 'Coming/Leaving Home' function, light and rain sensor with auto-dimming rear-view mirror	O	O	O
Guarantees			
2-year / unlimited km manufacturer warranty	X	X	X
3-year / 60,000 km Volkswagen EasyDrive Vehicle Service Plan	X	X	X
15,000 km service intervals	X	X	X
12-year anti-corrosion warranty	X	X	X

Disclaimer

1. Dimensions, capacities and abilities apply to standard vehicles.
2. Actual consumption will vary with vehicle loading, driving style, climatic and road conditions.
3. This information was effective as at 01 July 2020 valid for model year 20 and is subject to change without notice.

All diesel vehicles require low sulphur grade diesel of 50 ppm or lower.

*Fuel Consumption and Carbon Dioxide Emission Figures

Fuel consumption and CO₂ emissions values were obtained in accordance with the prescribed uniform measuring standard (SANS 20101: 2006 / ECE R101: 2005 in its currently applicable version). The verified values do not apply to a specific vehicle and do not constitute part of the product offer. They are provided solely for the purposes of comparison between different vehicle models. Because of the need to maintain strict comparability of results achieved by the standard tests, they cannot be fully representative of real-life driving conditions. Variations in driving styles and in road, vehicle and ambient conditions, will have a bearing on the results achieved on the road. For these reasons consumption achieved on the road will not necessarily accord with these verified values. Based on lightest variable (no options) and 90% tank filling. Weight may vary depending on options fitted to vehicle. All measurements listed are based on series vehicles. Because of manufacturing tolerances/tyre sizes/type of chassis, the actual dimensions may differ slightly from the values stated here. The information about the degree of slope angle front and rear as well as the ramp angle each refer to the loaded condition of the vehicle in consideration of the gross vehicle weight.

**A combination of leather and high quality durable materials.

Caddy Panel Van Service & Maintenance Plans

Volkswagen EasyDrive Vehicle Maintenance Plans	Caddy Panel Van 1.6i 81kW SWB	Caddy Panel Van 2.0 TDI 81kW SWB	Caddy Maxi Panel Van 2.0 TDI 81kW LWB	Caddy Maxi Panel Van Sport 2.0 TDI 81kW LWB	Caddy Maxi Panel Van 2.0 TDI 103kW DSG® LWB
Maintenance Plan (4-year / 60,000 km)			R4,817		
Maintenance Plan (5-year / 90,000 km)			R16,008		
Maintenance Plan (5-year / 120,000 km)			R29,892		
Maintenance Plan (6-year / 150,000 km)			R45,758		
Maintenance Plan (6-year / 180,000 km)			R59,358		
Maintenance Plan (7-year / 210,000 km)			R74,941		
Maintenance Plan (8-year / 240,000 km)			R92,791		
Maintenance Plan (9-year / 270,000 km)			108,658		
Maintenance Plan (10-year / 300,000 km)			R126,366		
Subject to an Active Standard Volkswagen warranty or an Active Genuine Volkswagen Service Plan					

Volkswagen EasyDrive Vehicle Service Plans	Caddy Panel Van 1.6i 81kW SWB	Caddy Panel Van 2.0 TDI 81kW SWB	Caddy Maxi Panel Van 2.0 TDI 81kW LWB	Caddy Maxi Panel Van Sport 2.0 TDI 81kW LWB	Caddy Maxi Panel Van 2.0 TDI 103kW DSG® LWB
Service Plan (3 year / 60 000 km)			X		
Service Plan (4-year / 60,000 km)			R1,973		
Service Plan (5-year/ 90,000 km)			R8,694		
Service Plan (5-year/ 120,000 km)			R14,018		
Service Plan (6-year/ 150,000 km)			R19,323		
Service Plan (6-year/ 180,000 km)			R25,125		
Service Plan (7-year / 210,000km)			R31,013		
Service Plan (8-year / 240,000km)			R37,911		
Service Plan (9-year / 270,000km)			R43,215		
Service Plan (10-year / 300,000km)			R51,174		

The Caddy Panel Van



Low Fuel Consumption

Averaging from
5.7 to 8.2ℓ/100 km*.

Cleverly thought out storage system

Several storage possibilities
in the interior.

Unique drive concept

DSG® dual clutch gearbox.

High payload

Up to 798 kg in the
Caddy Maxi Panel Van.

Standards of safety

Includes driver and front
passenger airbags and
Multi-Collision Braking (MCB)
System as standard.

Long load compartment

Up to 2,249 mm in
the Caddy Maxi.

Maximum functionality and flexibility

Front double folding passenger seats.
Wide sliding door which comes
standard on the Caddy Panel Van
and Caddy Maxi Panel Van.

*Fuel consumption and CO₂ emissions values were obtained in accordance with the prescribed uniform measuring standard (SANS 20101: 2006 / ECE R101: 2005 in its currently applicable version). The verified values do not apply to a specific vehicle and do not constitute part of the product offer. They are provided solely for the purposes of comparison between different vehicle models. Because of the need to maintain strict comparability of results achieved by the standard tests, they cannot be fully representative of real-life driving conditions. Variations in driving styles and in road, vehicle and ambient conditions, will have a bearing on the results achieved on the road. For these reasons consumption achieved on the road will not necessarily accord with these verified values. Based on lightest variable (no options) and 90% tank filling. Weight may vary depending on options fitted to vehicle. of comparison between different vehicle models. Because of the need to maintain strict comparability of results achieved by the standard tests, they cannot be fully representative of real-life driving conditions. Variations in driving styles and in road, vehicle and ambient conditions, will have a bearing on the results achieved on the road. For these reasons consumption achieved on the road will not necessarily accord with these verified values. Based on lightest variable (no options) and 90% tank filling. Weight may vary depending on options fitted to vehicle.



Getting the job done

Each day brings countless new challenges, which call for quick and professional solutions.

With the Caddy Panel Van you have a vehicle that provide the best support in virtually every situation. More functional, flexible and versatile than ever before, the manoeuvrable and compact light commercial vehicles offer you everything you need to convey a professional image to your customers.



The design

No matter what industry you work in, the Caddy Panel Van always exudes a high degree of competence and dependability.

This is achieved through its sharper and clearer lines, dynamic front, and redesigned back end. The Caddy Panel Van comes standard with rear wing doors. Further highlights include the chrome trim strip on the radiator grille, and the striking headlights.

The interior

The Caddy has been thoroughly enhanced – outside and inside. The high-quality finish on the cockpit impresses with its clearly arranged instrument cluster and easy-grip steering wheel with sporty flat bottom. This can be adjusted to individual preferences, and promotes a natural seating position.



The cleverly thought-out system



**In any and every job,
efficiency and
organisation is key.**

The Caddy offers you the support you need, with a storage system made up of several storage compartments and surfaces of varying sizes. Take, for instance, the roof shelf, which extends across the full width of the vehicle, and opens directly above the driver and front passenger seats. Invisible from outside, it offers sufficient space for work gloves, a lunchbox, or a notebook computer.

The storage pockets in the doors can hold a 1-litre bottle each, while the centre console is equipped with four cup holders. For the first time, two open glove compartments are also included. This keeps everything in the right place.

The wide sliding door and tail-end solutions



Hop in, hop out. The doors of a commercial vehicle are opened and closed repeatedly over the course of a day – and heavily strained in the process.

That is why the Caddy is built with hinges, rails and handles that are equal to the most demanding conditions. The low loading sill height, and numerous door variants are also a testament to this. The tailgate is equipped with a soft touch closing system as standard for effortless loading and unloading.

The Caddy Maxi Panel Van and Panel Van Sport

The short wheelbase Caddy Panel Van comes standard with a sliding door on the left with the option of a sliding door on the right.

Rear wing doors (¾ to ¼) come standard on the Caddy Panel Van.





Caddy Panel Van

Caddy Maxi Panel Van

The Caddy Panel Van

Big, yet compact: The load compartment of the Caddy Panel Van triumphs with its impressive volume and range of loading options.

Even with the short wheelbase, it offers a load capacity of 3.2 m³, which increases to 4.2 m³ for the Caddy Maxi Panel Van. The level load compartment is accessible through the rear, or the windowless roof-height sliding door on the front passenger side. This guarantees complete privacy, and prevents possible break-ins.





Form and function

The Caddy Panel Van boasts a generous load compartment, which can be equipped according to your needs.

Standard equipment includes rubber flooring in the cab, partitioning and six to eight lashing rings. The Caddy Panel Van is suitable for conversions and, in practically no time at all, it can be converted into a fully functional service vehicle for repair services, installation work and many other industries.

Lashing rings

The load compartment has six to eight fold-down lashing rings that are securely mounted to the vehicle floor. You can fix tools and materials securely, in compliance with regulations, with the aid of the tear-resistant tensioning belts.





4,408 mm
vehicle length
in the Caddy Panel Van

4,878 mm
vehicle length
in the Caddy Maxi Panel Van

The Caddy Maxi Panel Van

Extended load compartment.
High towing capacity.
Excellent payload.

Those who frequently transport heavy or bulky goods will appreciate the high payload and large load compartment volume of the Caddy Maxi Panel Van. Compared to the Caddy Panel Van with short wheelbase, the load volume capacity is 1 m³ greater at 4.2 m³. Eight built-in lashing rings are provided in the load compartment floor to ensure that the load is secured in compliance with regulations.

Compatible tensioning belts and safety nets are available on request from your Volkswagen Commercial Vehicles Dealership. With the Caddy Maxi Panel Van you can tow a braked trailer load of up to 1,500 kg.



The Caddy

Maxi Panel Van Sport



Life is more exciting in the Caddy Maxi Panel Van Sport.

With body-coloured bumpers and mirror housings, 16" 'Fortaleza' alloy wheels and front fog lights, work has never looked this good. With so many convenient features, like electric windows and exterior mirrors, dual sliding doors for easy access and a Composition Audio radio, getting the job done has never been this comfortable.

The standard equipment



Caddy Panel Van

- 5-speed manual
- Multi-Collision Braking (MCB) System
- 15" steel wheels
- 2 seats
- Manual windows
- Driver and front passenger airbags (including front passenger deactivation)
- Composition radio media with LCD screen
- Manually controlled heating system
- Servotronic® power-steering (speed-sensitive)
- 6 lashing rings
- Left sliding door
- Roof rail preparation
- Rear wing doors with windows covered by opaque film on the inside
- Separate daytime running lights (permanently switched on during driving)
- 4-year / 60,000km EasyDrive Vehicle Maintenance Plans
*Subject to an Active Standard Volkswagen warranty or an Active Genuine Volkswagen Maintenance Plan
- 3-year / 60,000km EasyDrive Vehicle Service Plans
- 2-year unlimited warranty



Caddy Maxi Panel Van

- 5-speed manual
- Multi-Collision Braking (MCB) System
- 16" steel wheels
- 2 seats
- Manual windows
- Driver and front passenger airbags (including front passenger deactivation)
- Composition radio media with LCD screen
- Climatic® airconditioning system
- Servotronic® power-steering (speed-sensitive)
- 8 lashing rings
- Dual sliding doors
- Roof rail preparation
- Rear wing doors with windows covered by opaque film on the inside
- Separate daytime running lights (permanently switched on during driving)
- 4-year / 60,000km EasyDrive Vehicle Maintenance Plans
*Subject to an Active Standard Volkswagen warranty or an Active Genuine Volkswagen Maintenance Plan
- 3-year / 60,000km EasyDrive Vehicle Service Plans
- 2-year unlimited warranty

The Caddy Maxi Panel Van is also available with DSG®, which, in addition to the above, includes:

- 6-speed DSG®
- Rest Assist (fatigue detection)
- 'Plus' multi-function display
- Climatic air-conditioning system

The standard equipment



Caddy Panel Van Sport

- 5-speed manual
- Multi-Collision Braking (MCB) System
- 16" 'Fortaleza' alloy wheels
- 2 seats
- Electric windows and exterior mirrors
- Driver and front passenger airbags (including front passenger deactivation)
- 'Composition Audio' radio with LCD screen
- Climatic® airconditioning system
- Servotronic® power-steering (speed-sensitive)
- 8 lashing rings
- Dual sliding doors
- Roof rail preparation
- Rear wing doors with windows covered by opaque film on the inside
- Separate daytime running lights (permanently switched on during driving)
- Towbar preparation (incl. trailer stabilisation)
- 4-year / 60,000km EasyDrive Vehicle Maintenance Plans
- *Subject to an Active Standard Volkswagen warranty or an Active Genuine Volkswagen Maintenance Plan
- 3-year / 60,000km EasyDrive Vehicle Service Plans
- 2-year unlimited warranty

Engines



DSG® for 103 kW engines

Dual clutch gearbox DSG®

Thanks to the intelligent gearshift system, the 6-speed gearbox changes fluidly at the right time to the next preselected gear. The gears can also be changed with a light tap.

1.6 l petrol (81 kW)

Average fuel consumption:
from 7.3 to 8.2 l/100 km

2.0 l TDI (81 kW)

Average fuel consumption:
from 5.7 to 5.8 l/100 km

2.0 l TDI (103 kW)

Average fuel consumption:
from 6.3 l/100 km

TDI

The TDI engines

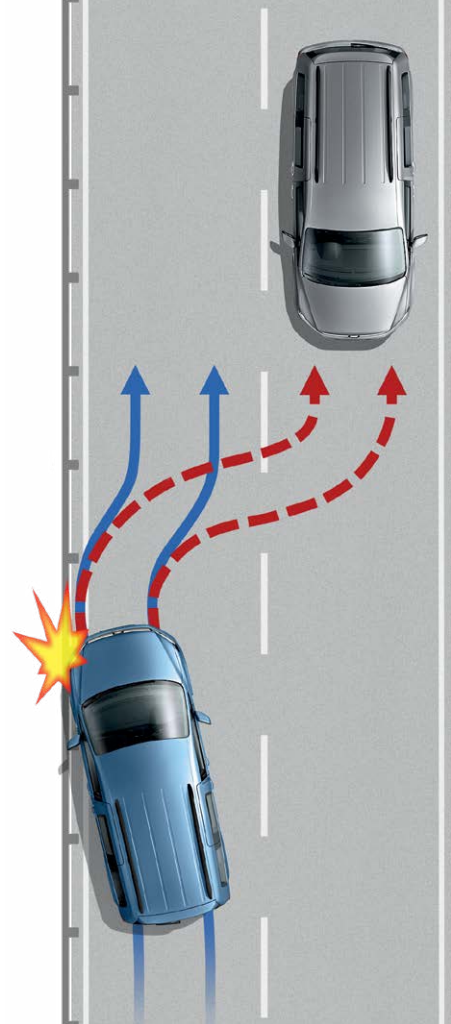
The fuel-efficient 2.0 l turbo diesel engines with common rail direct injection are available in several performance levels. The 81 kW and 103 kW versions have impressive fuel consumption and emissions values. The 103 kW engines can be combined with the dual clutch gearbox DSG®.



The safety systems

Safe. Even in critical situations.

To ensure that every drive ends as stress-free as it begins, the Caddy is equipped with various safety systems, which are activated in critical situations as a preventative measure. New to the onboard standard equipment is the Multi-Collision Braking System. Following an accident, the vehicle begins a phased braking action down to 10 km/h in order to prevent secondary collisions. Should an impact nonetheless result, driver and front passenger airbags come standard. Curtain airbags are optional on all Panel Van models.



Electronic Stability Programme (ESP)

It prevents under- or over-steering via targeted braking of individual wheels.



Anti-lock Braking System (ABS)

Prevents wheel block and, thus, maintains manoeuvrability.



Electronic Differential Lock (EDL)

Distributes the engine torque to the tyres without slippage.



Traction Control System (TCS)

Prevents wheelspin.



Multi-Collision Braking System

Triggers braking after a collision, with the aim of preventing secondary collisions. This system activates when two independent sensors detect an accident. After a short delay, the vehicle begins a phased braking action down to 10 km/h, during which the driver can take over at any time.



Seatbelt warning

If their seatbelts are not fastened, the seatbelt warning reminds the driver and front passenger to fasten their belts with a visual warning when the engine is started, and an acoustic warning after setting off.



Airbags

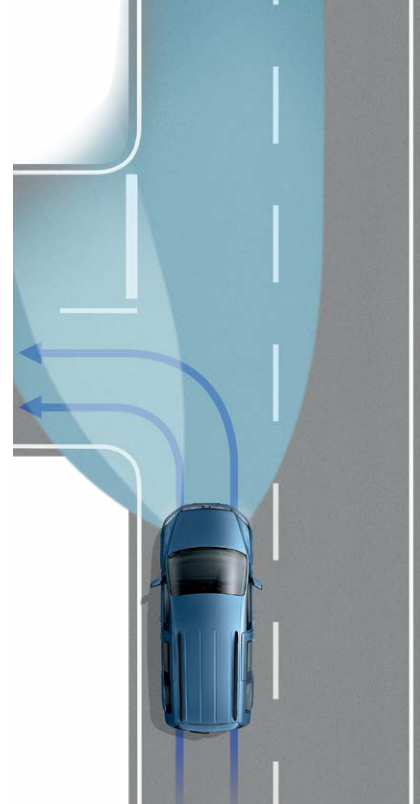
Driver and front passenger airbags offer the occupants of the cockpit the best possible protection in the event of head-on impacts. The front passenger airbag can be deactivated using the vehicle key.

All features standard on Caddy Panel Van

The driver assistance systems

Comfort on the job and on the road.

The Caddy can be fitted with a range of innovative driver assistance systems on request. These constantly analyse driving behaviour, so as to be able to intervene to assist the driver if necessary. Therefore, you and your passengers have even greater comfort on the road.



Driver Alert System (O)

Uses visual and acoustic warning signals to recommend that the driver takes a break as soon as it registers driving behaviour that indicates fatigue.



Brake Assist System (X)

Registers the speed at which the brake pedal is pressed. During a reflexive or emergency braking action, it ensures that full brake pressure is built up more quickly.



Daytime Running Lights (X)

Switch on automatically when the ignition is activated and lower the risk of an accident in daylight.



Hill Start Assist (X)

Prevents the vehicle from rolling back on inclines and makes handling easier when starting up on uphill slopes (available on DSG® models only).



Cruise Control (O)

With a speed of 30 km/h, it maintains the desired speed depending on uphill and downhill inclines or limits the top speed to a value selected by the driver.



Fog Lights (O)

Ensures optimal visibility in poor weather conditions. (Standard for Caddy Panel Van Sports)



Rear Park Distance Control (PDC) (O)

Emits audible warnings when obstacles are detected behind the vehicle when parking, and also provides a visual display of the vehicle's distance from the obstacles.



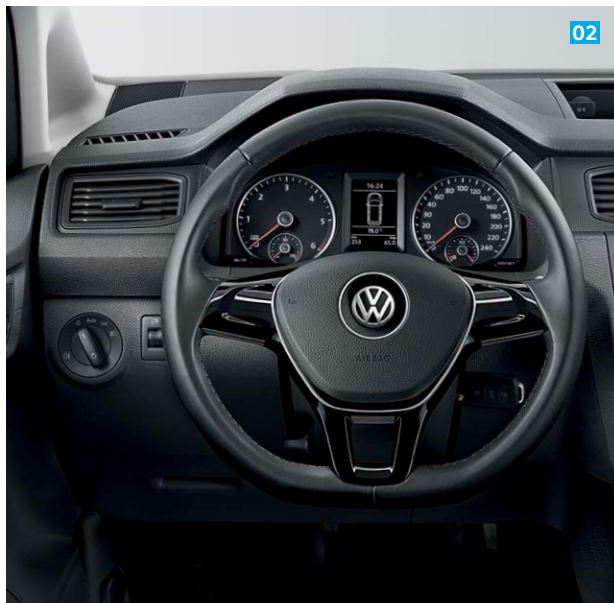
"Rear-view" Reversing Camera (O)

Simplifies parking by showing a limited view of the area behind the vehicle on the display of the radio system. Additional static guidelines facilitate the parking process. The reversing camera is only available in combination with the tailgate.

X = standard O = optional

Infotainment

01 Mobile Phone Interface (X) (not illustrated). A wireless Bluetooth interface enables you to make phone calls safely and conveniently during the journey using a microphone and the vehicle loudspeakers.



02 Leather-covered Multi-function Steering Wheel (O)

It gives you a good grip and is extremely user-friendly. The radio, a mobile phone or the cruise control can be controlled using the buttons.

03 "Plus" Multi-function Display (not illustrated) (O)

In addition to the functions of the multi-function display, it can be used to adjust the optional Light & Sight package. Standard on DSG® models only and available as an option across the rest of the range.

04 Multi-function Display (not illustrated) (O)

It shows current information, such as the time, remaining range, outside temperature, average consumption, and a gear recommendation for more fuel-efficient driving. Optional across the range with the exception of DSG® models.

05 "Composition Audio" Radio System (X)

The system consists of a TFT monochrome display, a 2 x 20 watt output with two loudspeakers, an SD-card slot, an AUX-IN interface and a USB port.





08 "Composition Media" Radio System (O)

The system consists of a 16.5 cm (6.33-inch) TFT colour display, a touchscreen with proximity sensor, an MP3- and WMA-compatible CD drive, a 4 x 20 Watt output with four loudspeakers, a dual tuner with PhaseDiversity for optimal radio reception, an SD-card slot, an AUX-IN interface, a USB port and a Bluetooth connection for mobile phones.

Available on Caddy Panel Van Sport models only.

Comfort



01 Lockable Glove Compartment (X)

Documents and valuable items can be kept safe behind the lockable lid, so that they cannot be seen from outside the vehicle.

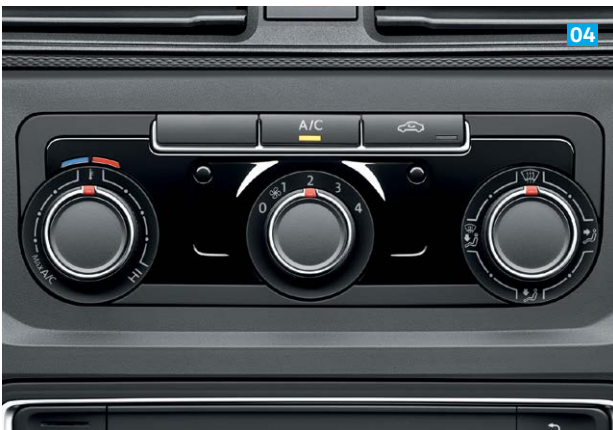
02 Electric Windows (O)

The flip switches are comfortably located within easy reach in the armrest on the door interiors, and have a comfort switch with jamming protector. Along with the electrically adjustable and heated exterior mirrors, these make up the Electric package.



03 Light & Sight Package (not illustrated) (O)

Sensors dim the rear-view mirror when the lights of the vehicle behind are too bright, and regulate the intervals of the windscreen wipers during rain. The automatic driving light control with daytime running lights switches the headlights on automatically when it starts to get dark. The package also features the manual "coming home" and "leaving home" functions. Available on Caddy Maxi Panel Van and Caddy Maxi Panel Van Sport models.



04 Airconditioning (X)

The semi-automatic airconditioning has an infinite adjustment, so that a pleasant interior temperature can be ensured at all times.



05 12 V Socket In Compartment, Front (X)

A 12 V socket is integrated into the open storage compartment on the dash panel, e.g. for mobile phones or notebooks.

Exterior



01 Towbar Preparation (not illustrated) (X)

The trailer detection control unit and professional wiring allow a trailer coupling to be easily retrofitted at any time, and is also fitted with trailer stabilisation.

02 Fixed Towbar (O)

It is designed for trailer loads from 660 kg (unbraked) to 1,500 kg (braked), and is also fitted with trailer stabilisation.



03 Bi-Xenon Headlights (O)

The Bi-Xenon headlights produce both high and low beams, and illuminate the roadway significantly better than conventional halogen headlights. They also stand out due to their low energy consumption and high durability.



04 Fog Lights (X)

They ensure a wide illumination of the roadway in thick fog, snow or heavy rain, and make safe driving easier.

Wheels & Rims



Steel Wheel (X)
6 J x 15 with 195/65 R15 tyre
(Standard on short wheelbase models only)



Caloundra (O)
Alloy wheels
6 J x 15 with 195/65 R15 tyre
(Optional on short wheelbase models only)



Steel wheel (X)
6 J x 16 with 205/55 R16 tyre
(Standard on Maxi Panel Van models only)



Bendigo (O)
Alloy wheels
6 J x 16 with 205/55 R16 tyre
(Optional on Maxi Panel Van models only)



Fortaleza (X)
Alloy wheels
6 J x 16 with 205/55 R16 tyre
(Standard on Caddy Panel Van Sport models)

Trims



Austin (X)
Cloth seat upholstery
Titanium Black
Standard

Colours

The illustrations on this page can only be regarded as a general guide as the print, onscreen view cannot render the true depth and brilliance of the paint finishes with absolute accuracy. Please note that certain paint and trim combinations may not be available.



Candy White
Solid



Cherry Red
Solid



Pure Grey
Solid



Indium Grey
Metallic



Reflex Silver
Metallic



Deep Black
Pearlescent



Buying a Volkswagen is only the beginning of our journey together

At Volkswagen, it's our mission to keep you and your family moving forward on life's journey. That's why we have a range of products and services designed to keep your Volkswagen in optimum condition and give you peace of mind. From car services and maintenance plans, to genuine parts and roadside assistance, Volkswagen is with you all the way.



EasyDrive Vehicle Plans

You do life,
we'll take care of the ride

Volkswagen's EasyDrive Vehicle Plans offer affordable and easy to understand cover on Service and Maintenance Plans. Our plans offer specialist care from qualified Volkswagen experts, ensuring your vehicle maintains its re-sale value. This way you can get back to enjoying the journey.

Get-Go

Service you know straight
from the Get-Go

The Get-Go service is available to all Volkswagen drivers with a vehicle that's four years or older, and without a Service or Maintenance Plan. You can get an affordable annual service for your Volkswagen by knowing the rate from the get-go. Get-Go Service includes parts and labour and will help you to maintain your service history.



This information was effective as at 01 August 2020
valid for model year 20 and is subject to change
without notice.

Visit us at vw.co.za
©Volkswagen South Africa



**Commercial
Vehicles**